



CONGRESS AND CONVENTION VENUE Teatre d'Artà

The theatre of Artà is an ideal space for hosting congresses, conventions, and working meetings, etc. as it has a main hall with seating for 460 persons, a conference room with seating for approximately 100 persons and a meeting room for 20 persons. In addition, we have the technical resources required to project images on a big screen and in Power Point.

The theatre cafeteria can provide snacks during the morning and coffee in the afternoon for 500 persons.

The theatre can also organise complementary tourist excursions so that visitors can get to know the area: Visit to Puig de Sant Salvador, the Talayotic settlement of Ses Paises or other parts of Artà.

In the area, there are various hotels with room for small groups and in the surrounding coastal area one can find a much wider hotel offer for larger groups.

The district of Artà is a short distance from the beaches of Cala Rajada, Cala Mesquida, Sa Colonia de Sant Pere, Font de Sa Cala, Canyamel and Cala Millor where congress participants can enjoy the sun and beach.

For more information, call 971 829 700 from 09:00 to 14:00 or 658773304, alternatively contact info@teatrearta.com

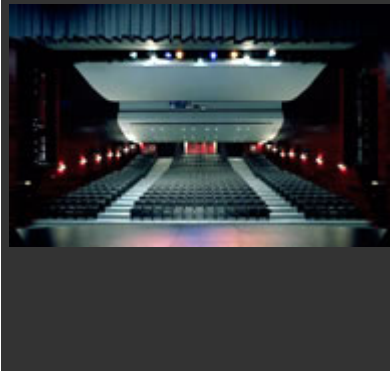


The auditorium has 460 seats and two access points from the main entrance.

The acoustic design of the theatre was carried out by Doctor Higiní Arau, who designed the false ceiling, combining the various materials in such a way as to achieve a homogeneous sound distribution in all areas of the auditorium.

All auditorium doors are sound and fire proof, and all materials used have also been fireproofed.

AUDITORIUM



The stage, measuring 134 m², allows artists considerable mobility.

The stage front, which measures 11 metres wide and 6 metres high, is the location of the curtain, the flies, the border and the cinema screen. The orchestra pit is located below. The catwalk is 14 metres high, leaving 2.5 metres free that allows access from above for two technicians. From here, descend 8 motorised bars, 13 manual bars and 16 counter-weighted bars.

The entire stage area is completely separate from the rest of the building by means of a fire curtain and fire/sound proof doors.

The fire curtain, weighing 11 tons, is motorised and lowers vertically covering the stage front.

STAGE



Lighting is controlled from the control room with a digital Strand Lighting desk and the sound with an Allen & Heath DR 128 digital matrix mixer, with Carver amplifiers and EAW loudspeakers.

CONTROL ROOM



Cinemeccanica 35 mm projection system.
Dolby SR system.

CINEMA

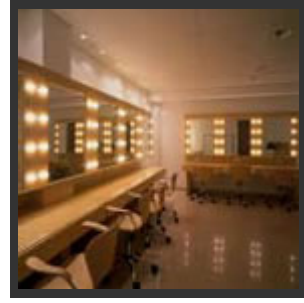


The Theatre of Artà has two group dressing rooms at stage level and two individual dressing rooms beneath the stage.

The dressing rooms are equipped with a public address system, audio-visual monitoring of the stage and direct communication with the stage manager.

DRESSING ROOMS

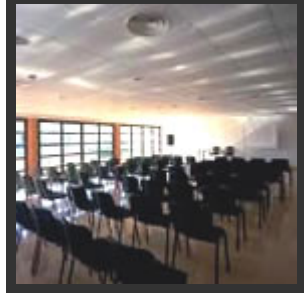




Multi-function space, measuring 108 m², for small format performances, conferences, exhibitions, etc.

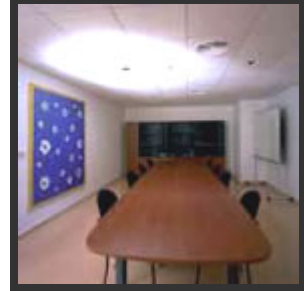
This space is equipped with a portable system comprised of compact disc, mini disc, video, mixing desk, projector, wireless microphone, table-top microphones and active sound monitors, projection screen, blackboard, etc.

CONFERENCE ROOM



This room is used for training activities, as a lecture room for theatre groups, presentations, etc.

MEETING ROOM



The theatre of Artà has a bar-cafeteria service open daily from 09:00 to 23:00.

BAR AND TERRACE



Opened in June 2001, the theatre of Artà was built under the supervision of the architect Mateu Carrió on land donated to the community for this purpose by Cristòfol Ferrer Pons. The theatre is located in the centre of Artà,

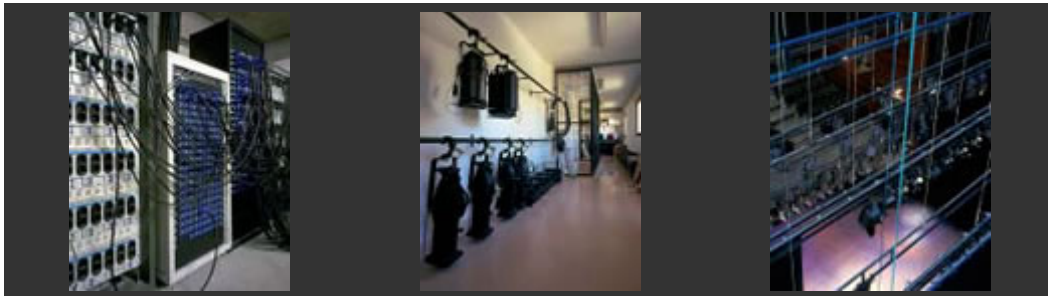
THE BUILDING

next to the Na Batlessa Cultural Centre and el paseo dels Tarongers, which surrounds it.



EQUIPMENT

- **Lighting:**
 - 72 digital dimmers by Strand Lighting of 2.5 kW per channel for a total of 384 circuits.
 - STRAND LIGHTING GSX control desk.
- **Spots:**
 - A total of 90. Robert Juliat, Strand Lighting, ADB.
- **Machinery:**
 - Genie AWP-30S personnel lift (12 metres high), 12 daises with adjustable height 1 x 2 m.
- **Electrical generator**



THE THEATRE OF ARTÀ - CENTRE OF CULTURAL ACTION

The Fundació Teatre Municipal d'Artà is the body created in order to improve management and guarantee citizen participation in its operation. It follows three lines of action:

- Space for social action at the service of citizen groups and of the community's needs.
- - Continuous training, working with schools and colleges and based on in-house training activities.
- - The regular planning of shows, which require certain main characteristics:
 - Special attention to local production and the results of training activity (School performances, youth workshops, etc.)
 - The combination of amateur work with professional work of artistic quality.
 - The establishing of the Catalan language as intrinsic and identifying communicative medium and other languages as a sign of openness to the world and to its artists.

- The presentation of theatre, music, dance and cinema

L'EDIFICI - EQUIPAMENT I SERVEIS - PROGRAMACIÓ I ACTIVITATS - CURSOS - CONTACTAR

© 2001 **Teate d'Artà**. Tots els drets reservats.