

IDEAS, NEWS & TRENDS

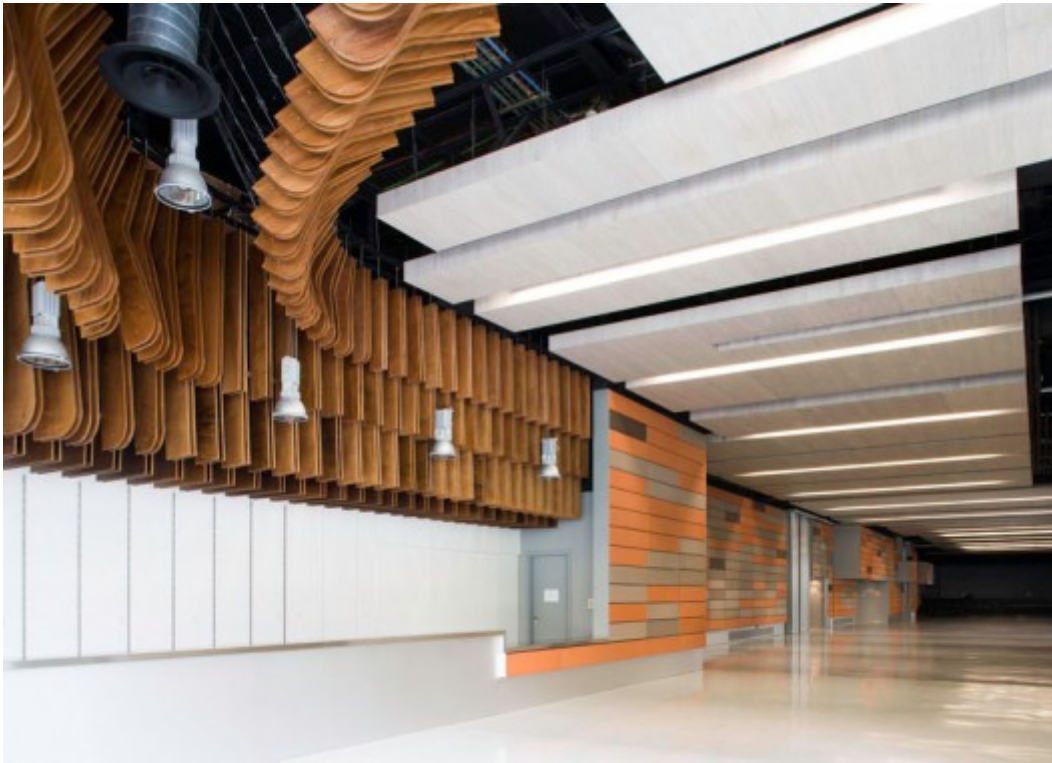
InteriorDesignSense

Tag Archives: Sqm

O **r** **d**
i **n** **o**
Ordino **C**
o **m** **p**
l **e** **x**
Complex / **A**
r **t** **e** **k**
s Arteks
A **r**
q **u**
i **t**
e **c**
t **u**
r **a**

Arquitectura

19 Feb



Architect: [ARTEKS Arquitectura](#) + Esther Pascal architect

Location: **Ordino, Andorra**

Architects in charge: **Elisabet Faura & Ester Pascal**

Collaborators: **Gemma Roca, Dalila Pregal, Alvaro Briceño, Malte Ruckert, Ruper Maurus, Carlos Cobreros, Cecilia Vázquez, Alex Miralles**

Artistic Collaborator: **Victor Pérez Porro**

Structure: **GETCE BEAL_ Xavier Beal Vilaginés**

Utilities: **Bernabé Rodríguez**

Acoustics: **Higini Arau**

General Contractor: **COIMA S.A**

Constructed Area: **9,714 sqm**

Photographs: [Pedro Pegenaute](#) & [Eugeni Pons](#)



The quiet complex is a building composed by four different programmatic activities. Because of its dimension, complexity, trying to obtain a better-scaled relationship with the urban context of the town of Ordino, and adapting itself to the different existent typologies, the volume of the building has been fragmented following its different activities. Differentiating roofs, materials and façade depths.

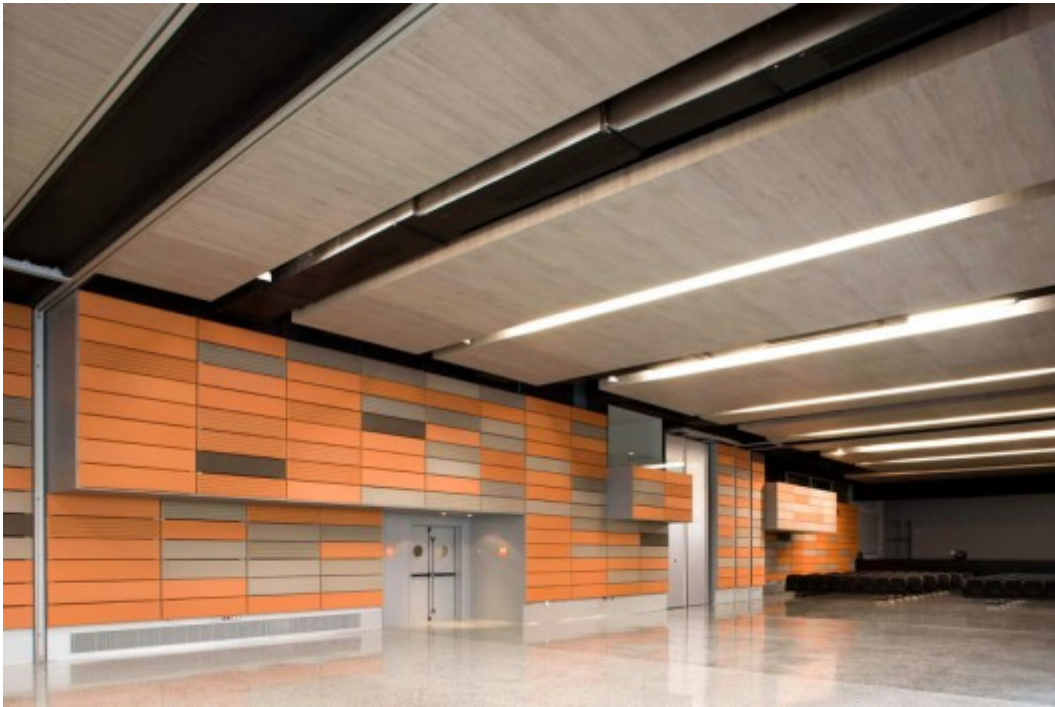


**P
G
M** **R
R
S** **O
A** **:**

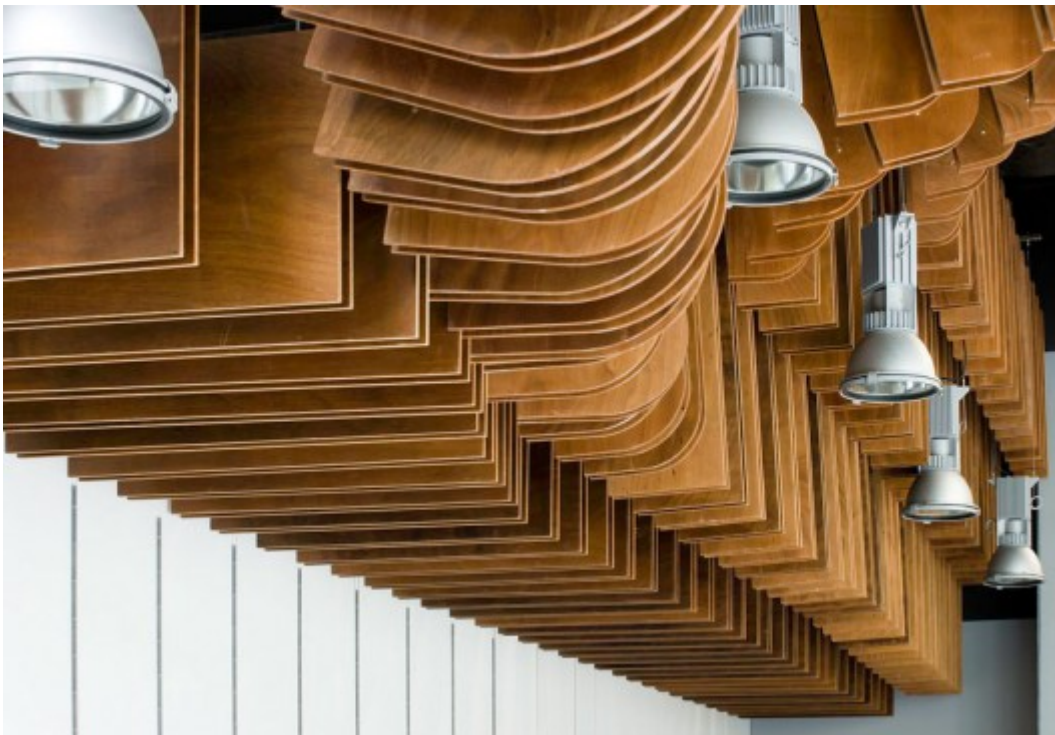
PROGRAMS:

CONGRESS CENTRE:

The main room of the congress centre tries to recreate the sensations of an exterior space but with the comfort of an interior space.



1. Both interior facades are made with acoustic ceramic pieces, being one of them “self-lifting” and the other a floating facade.
2. False roof “trompe l’œil” to turn the sight of the installations aside.
3. False roof “boomerang” that explodes with wood pieces, to reduce the height room perception in the tables area.



4. A continuous terrazzo pavement with 20 different grain combinations that emphasize the room's depth.

5. Mobile walls that allows different ways to divide the spaces, creating versatility.

KINDERGARTEN

The building is conceived as an interaction between two volumes. A greater volume contains common spaces and facilities, whereas a smaller one contains different rooms for the daily activities of the children. All the links between themselves adapts it to the local weather conditions, having "patios" with day light during the day, a ramp for the children and scales and elevators for the staff.



Luminous spaces and special materials in the floor to adapt the rooms to the children games necessities.

PARKING:

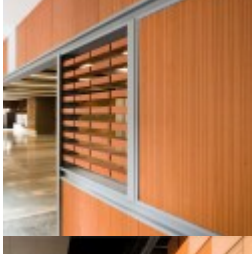
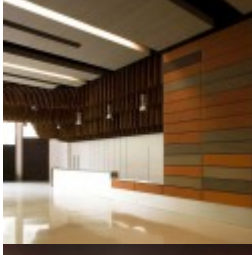
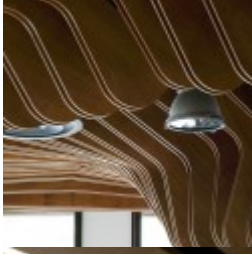
Visible access without being protagonist.

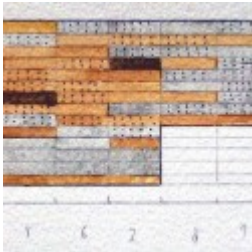
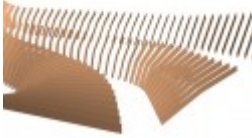


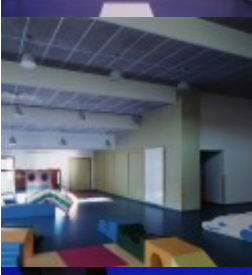
HOUSING BUILDING

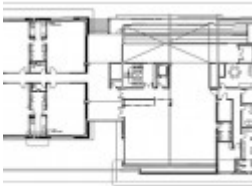
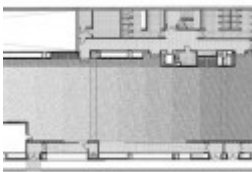
A public space is created between the housing facility and the kindergarten, leaving the first one as an independent building without interfering in the operation of the kindergarten, being able to construct it independently of the rest of the buildings.

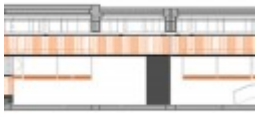




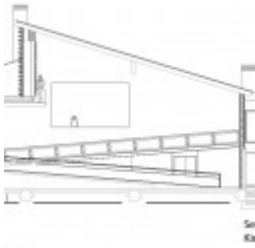








Elevation Hall
Water Center



5
6

